

FINDING AN INCLUSIVE EMPLOYER

What to look for when researching apprenticeships

Many employers will support apprentices with additional needs. To see if an employer is inclusive, you can start by looking at their website or social media, where they advertise and what they offer candidates.



Disability
confident
logo.



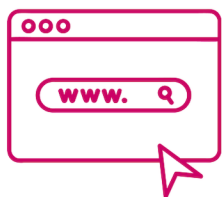
Job adverts:
“We welcome
all applicants”.



Offers of
support when
applying.



Awards for
diversity and
inclusion.



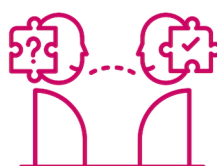
Adverts on
SEND
job sites.



Workplace
groups for
employees
with SEND.



All kinds of
people in
pictures they
use.



Disability
Employment
Adviser
recommended.

